

**FAR
BEYOND**

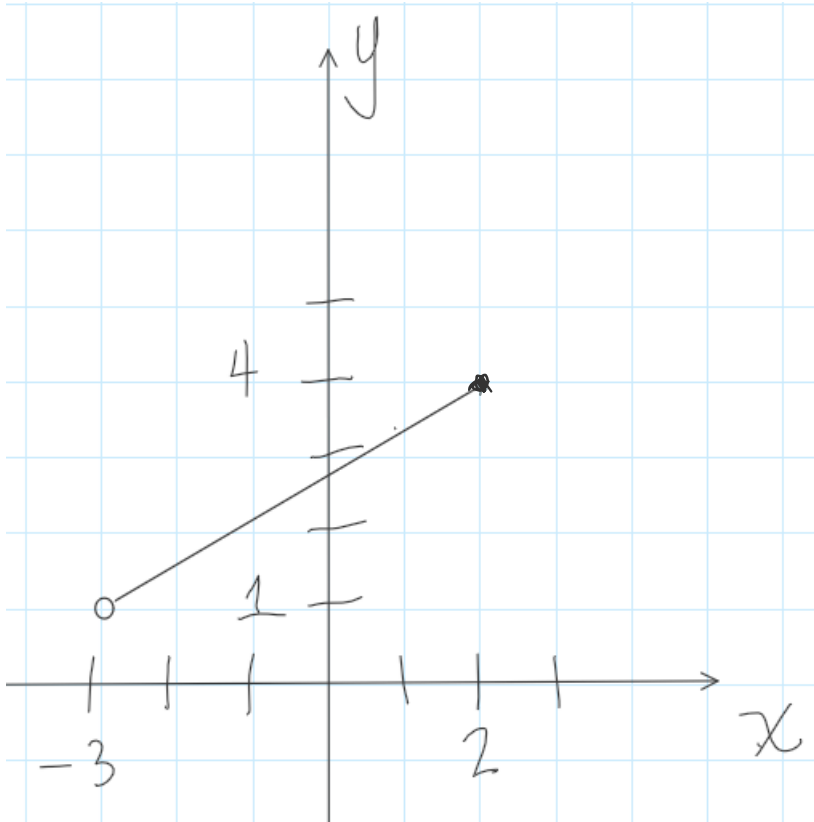
MAT122

Domain/Range from a Graph



Stony Brook University

Identify Domain/Range from a Graph



Compound Inequality:

domain:

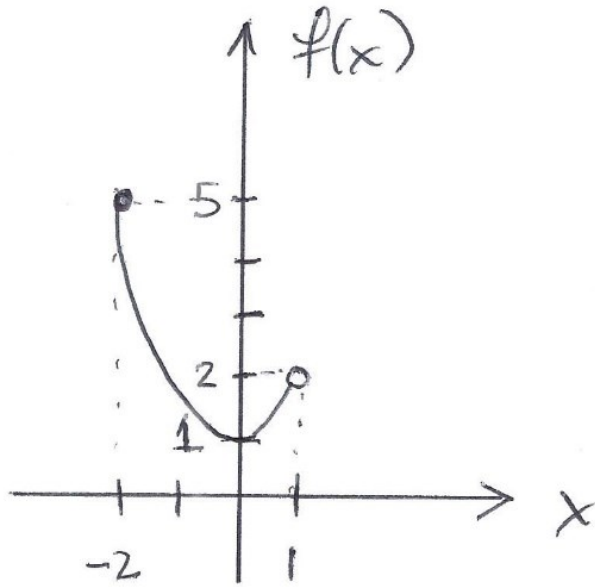
range:

Interval Notation

use parentheses for open circle

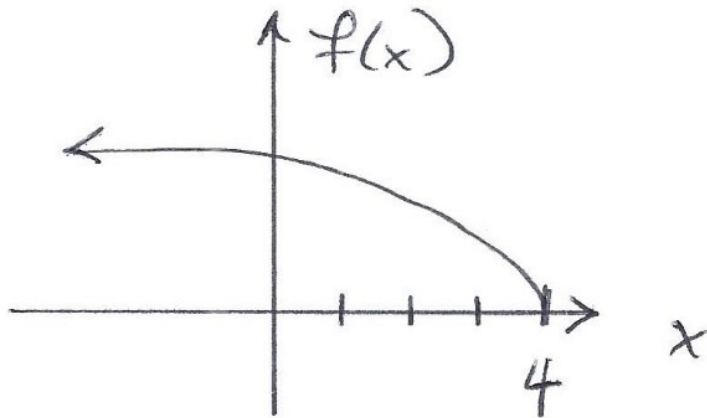
use bracket for closed circle

Identify Domain/Range from a Graph (cont'd)



domain:

range:

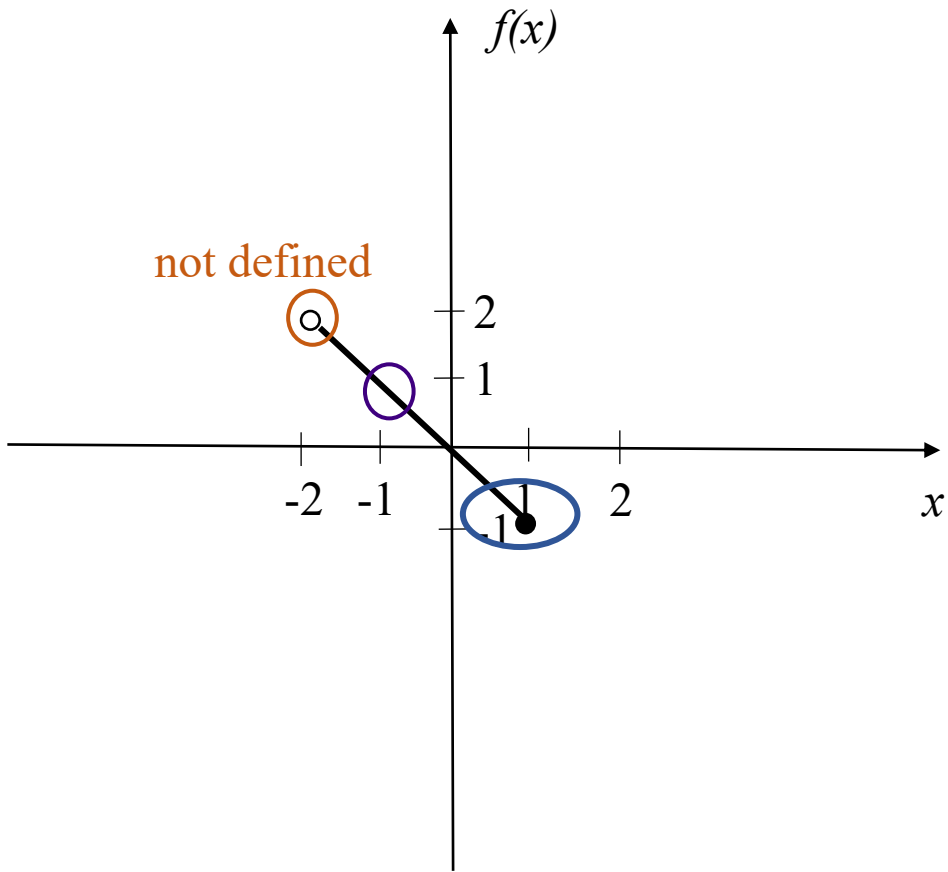


domain:

range:

use parenthesis for
either infinity

Identify Values on a Graph



For what x -value is ...

... $f(x) = -1$? $x = 1$

... $f(x) = 1$? $x = -1$

... $f(x) = 2$? none